



Roberto Beccaceci

**PICCOLA CANTATA
PER LA NOTTE DI NATALE**
per coro misto e orchestra

Fagotti

Controfagotto

ABBREVIAZIONI E SEGNI CONVENZIONALI

M	motore acceso,
M	motore spento;
arco	con l'arco,
N	posizione normale,
ord.	ordinario,
pizz.	pizzicato,
punta	alla punta,
tast.	sulla tastiera;
Sord.	con sordina,
S. Sord.	senza sordina,
SV	senza vibrare;
l.v.	lasciar vibrare,
s.att.	senza far sentire l'attacco,
sm.to	smorzato;

i segni:  indicano un comune livello dinamico di tutti gli strumenti privi di indicazione propria.

AVVERTENZE

1. I segni di alterazione hanno valore - esclusivamente - nell'ambito della misura e del singolo pentagramma in cui si trovano.
2. La linea tratteggiata indica il passaggio della parte principale da una voce ad un'altra.

Durata: 8' - 8':30'' ca.


Fagotti - Controfagotto

PICCOLA CANTATA PER LA NOTTE DI NATALE
per coro misto e orchestra

R. Beccaceci
(2000)

- I -

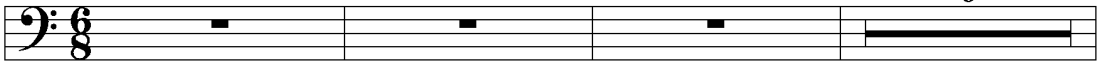
Moderato

 = 72 ca.

A
3-8

6

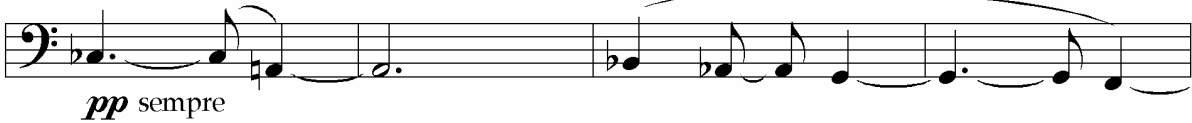
Controfagotto



9

B

C.fag.

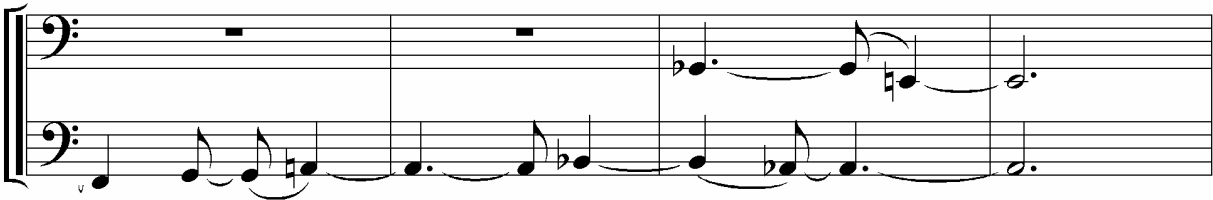


13

pp sempre

Fag. 2.

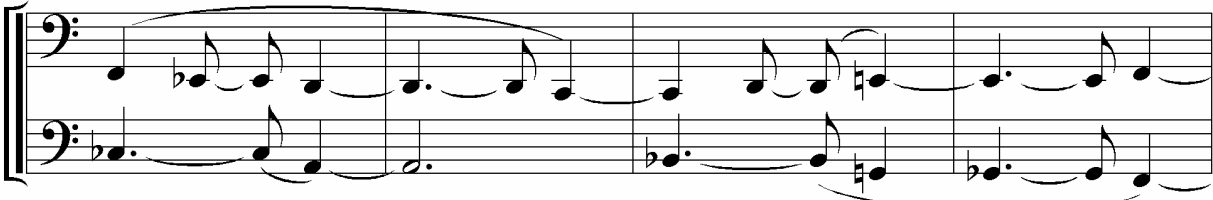
C.fag.



17

Fag. 2.

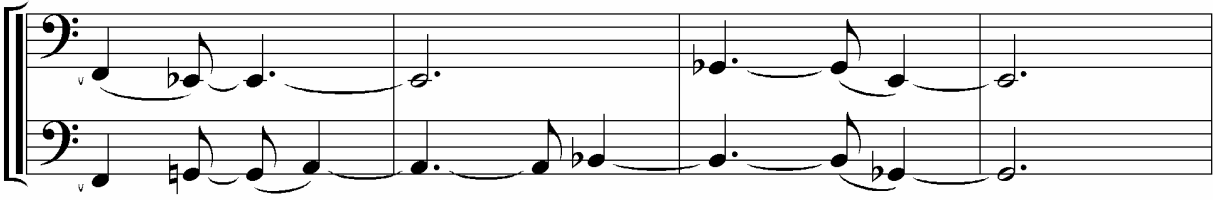
C.fag.



21

Fag. 2.

C.fag.



Fagotti - Controfagotto

25

Fag. 2.

C.fag.

29

C

Fag. 2.

C.fag.

33

Fag. 2.

C.fag.

37

D

Fag. 2.

C.fag.

41

E

Fag. 1.

Fag. 2.

C.fag.

45 **F** **G**

Fag. 1.

Fag. 2.

p

pppp

p

50 **H**

Fag. 1.

Fag. 2.

pp

rit. -----

55

Fag. 1.

Fag. 2.

p

p

pp

ppp

- II -

Tempo di pastorale



A

B

61

62-85

24

Fag.

89

Fag.

94

Fag.

99

Fag.

104

Fag.

C

109

Fag.

C.fag.

rit.

a Tempo

D 

114

Fag.

C.fag.

mf *mp*

1. solo

mp

Fag. 119 

Fag. Musical score for Bassoon (Fag.) in E major, 3/4 time. The score consists of three measures. The first measure (123) contains a triplet of eighth notes (F4, G4, A4) beamed together, followed by a quarter rest. The second measure (125-127) contains a triplet of eighth notes (B4, C5, D5) beamed together, followed by a quarter rest. The third measure (a 2) contains a half note (E5) and a quarter note (D5) beamed together, with a dynamic marking of *p* (piano). A key signature change to E major is indicated by a sharp sign on the F line. A box containing the letter 'E' and a musical notation example (quarter note = quarter note) is located above the third measure.

rit. molto e con estrema gradualità

Fag.

The musical score for the Bassoon (Fag.) part is written on a single staff in bass clef with a key signature of two sharps (F# and C#). The piece begins at measure 129 with a half note F#3, followed by a half note G#3, and then a whole rest. At measure 131, the time signature changes to 3/4, and there is a whole rest. Above the staff, a box contains the notation '♪ = ♪', indicating a tempo change. The piece continues with a half note F#3, followed by a half note G#3, and then a whole rest. The dynamic marking 'ppp' is present below the staff. The score ends with a double bar line.